



EPS G2

PATENTED SINUSOIDAL
KEY TECHNOLOGY



THE TRUSTED MASTER
KEY SYSTEM FOR
HIGH SECURITY

PATENT PROTECTED to 2041



**PATENTED
SINUSOIDAL KEY
TECHNOLOGY**





EVVA: EPS G2 **mechanical high security master key system with patented technology**

Suitable for simple key alike systems, small master key systems through to large complex multi-level master key systems.

EVVA EPS G2 is not a simple pin-tumbler system. EPS G2 employs unique, patented features to harden it against lockpicking, drilling and key bumping, as well as making key theft and illicit duplication more difficult. At the front of the cylinder, hardened steel pins provide additional intrusion-resistance. In addition, multiple broaching sidebars (providing a theoretical 53 million combinations) enable authorised EVVA dealers to design, build and install master key systems with hierarchies to meet even the most complex access requirements of an organisation. All cylinders are made from brass, stainless steel and nickel components to deliver maximum operational lifespan.



CONTROLLED PROTECTION

LEGAL PROTECTION

TECHNICAL PROTECTION

EPS G2 HIGH SECURITY SYSTEM OFFERS A COST-EFFECTIVE WAY TO IMPLEMENT A COMPLEX & RESTRICTED MASTER KEY SYSTEM.

FEATURES

- + Patent protected until 2041
- + 53 million possible key combinations
- + Excellent price performance ratio
- + High security design
- + Suitable for the harshest environments
- + Long life – anti wear parts
- + Robust - difficult to break keys
- + Three level anti-copy protection
- + Body and barrel drilling protection
- + Picking and scanning protection
- + Bump resistant
- + Extensive cylinder range



More protection

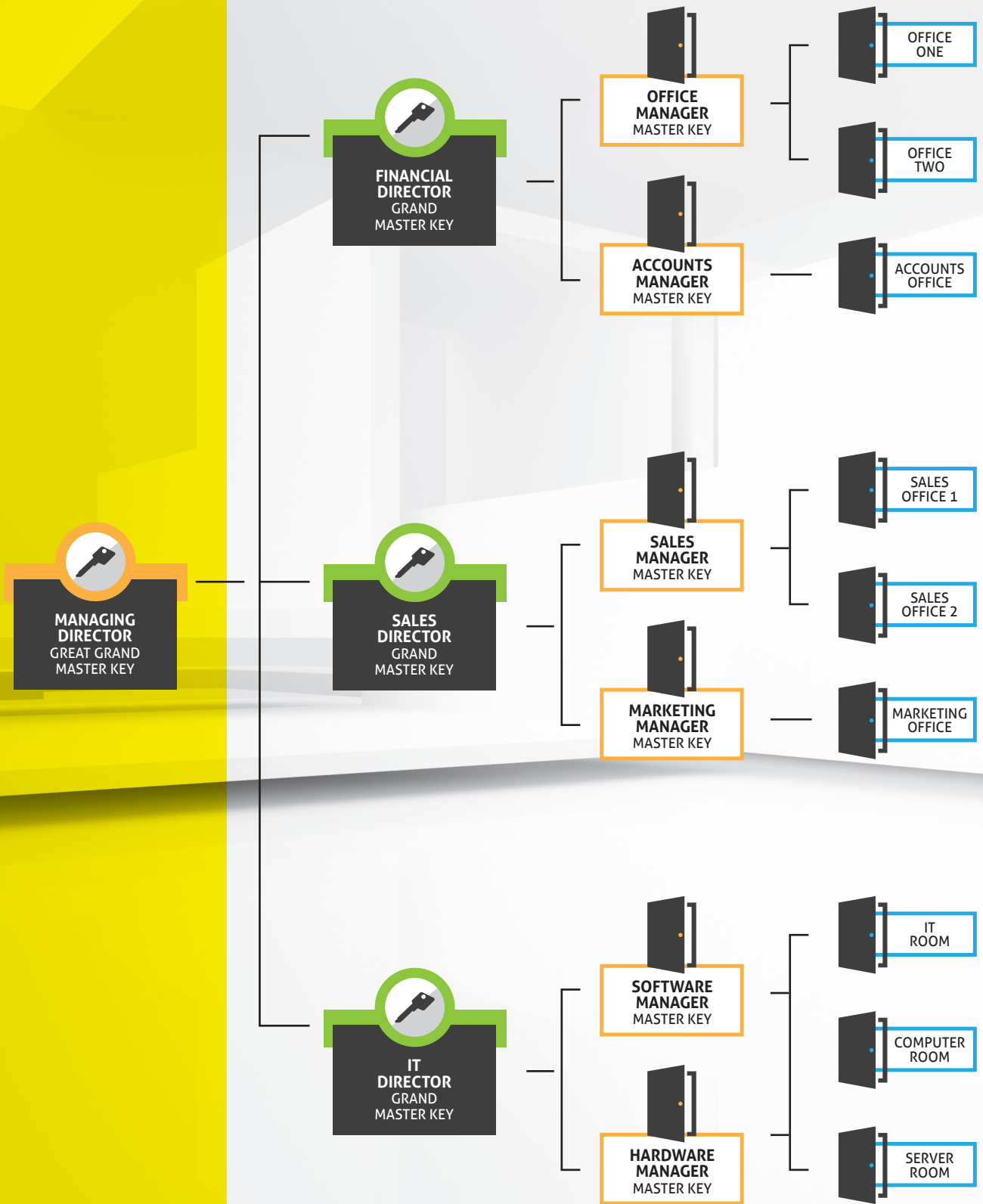
Hardened steel elements provide enhanced protection against drilling attacks. These same hardened elements also increase protection against pulling the cylinder to a level that meets international standards. The cylinder by design combines a combination of sliders, side bars and control bars making them extremely resistant to picking, bumping and impressioning attacks.

Unique security

EPS is recognised globally for security, quality, and value. It has been installed in thousands of facilities because it delivers robust security with keys that are difficult to illicitly copy, locks that are extremely difficult to pick or bypass, and allows flexible master key hierarchies to be designed to suit the access needs of almost any organisation. The next generation EPS G2 takes this to another level with the patented sinusoidal key technology to provide the next level of protection. This is why EPS G2 will continue to be the master key system of choice for industries and organisations that demand superior security.

Any industry

EPS is recognised globally for security, quality, and value. It has been installed in thousands of facilities and delivers such a robust security that keys are difficult to illicitly copy, locks are extremely difficult to pick or bypass, and phantom keys are nearly impossible. The next generation EPS G2 takes this to another level with the patented sinusoidal key technology to provide another level of protection. This is why EPS G2 will continue to be the master key system of choice for industries and organisations that demand superior security.



EVVA: EPS G2

exceptional master key hierarchies

SUCCESS STORY

This organisation used EPS to replace more than 13,000 cylinders across every depot and office, and issued 20,000 individual user keys as well as hundreds of separate master keys.



colour identification insert (18 colours available)



Each master key has its own unique set of access permissions: some allow office managers unrestricted access to their particular section (but nowhere else); some are for contract cleaners restricted to specific areas; others are for security guards with very broad access requirements. An EPS G2 system enables authorised EVVA dealers to make specific master keys that meet any of these requirements — whether a user needs access to just three locks within the system, or as many as three thousand.

Critically, the patented design and keying algorithms that drive the security of the EPS G2 minimise the risk of phantom keys, even in these large & complex security systems.

Normal master key systems cannot adequately handle this sort of hierarchical complexity. As the system scales, the possibility of phantom keys occurring rapidly becomes unacceptably large.



REASONS WHY

MORE ORGANISATIONS

CHOOSE **EPS G2**



Patented System

Patent protection to 2041.

High Security Design

EPS G2 is a high-security lock system that uses patented technology to eliminate key bumping and minimise intruders' ability to tamper with, pick, or bypass the lock.

Three Level Anti-Copy Protection

Patents (EPS G2 is patent-protected till 2041), many varieties of key profiles and keys can only be manufactured by authorised EVVA dealers.

Long-Life, Anti-Wear Parts

The combination of precise manufactured components is why EPS G2 locks have been cycle-tested to 100,000 operations.

Adaptability

EPS G2 cylinders can be crafted to suit almost any lock or door, including those of other leading brands.

Ease of Use

Optimum grip, rounded key contours make EPS G2 keys easier to use.

Hardened Components

Hardened metal elements provide exceptional resistance to drilling, impact, or physical pulling attacks.

Low Chance of Phantom Keys

The use of sidebars and sliders means EPS G2 scales to a huge size without phantom keys compromising security.

Weather Resistant

Operates normally in the harshest of Australian climates from -20C to 80C.

RELIABLE, LONG LASTING PHYSICAL SECURITY

EVVA: EPS G2

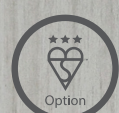
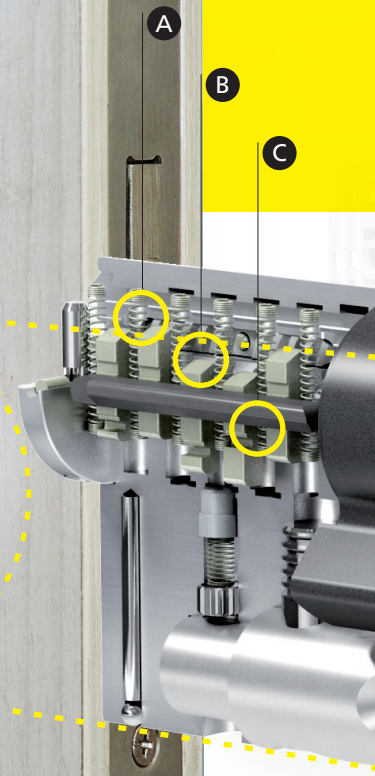
one system multiple cylinder types



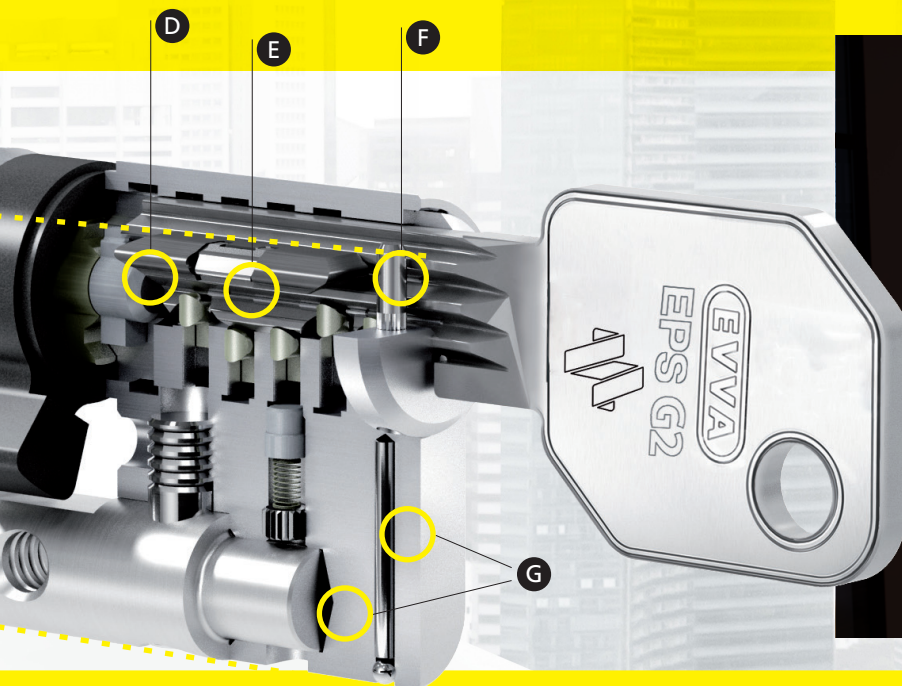
The EPS G2 system has a cylinder type to fit almost any common Australian or New Zealand lock. This includes oval cylinders to suit Carbine, Lockwood, Kaba, Gainsborough, Legge and Astra mortice locks; rim and internal cylinders to suit Lockwood and other brands of deadlocks and deadlatches; fixed and floating cam profile cylinders; and locksets for Carbine, Schlage, and Lockwood locksets.

EVVA can also produce cylinders to suit cupboard locks; T&L handles; padlocks; pushlocks and camlocks, plus cylinders for keyswitches and rollerdoor locks.

All EVVA EPS G2 cylinders are cycle tested to at least 100,000 operations. Cylinders also meet the highest standards for corrosion and fire resistance and can operate normally in temperatures from -20 degrees Celsius to 80 degrees Celsius.



Each EPS G2 key has both edge cuts and special side cuts or notches. The internal sliders within the cylinder align with the control bar when a key with the correct edge cuts is inserted. At the same time, the cuts or notches in the side of the key must also match the side bar within the cylinder. When the correct key is inserted, both the control bar and side bar will correctly align allowing the cylinder to open.



- A** Spring for locking slider
- B** Locking pin
- C** Control bar
- D** Side bar
- E** Manipulation control
- F** Barrel drilling protection
- G** Body drilling protection

THREE LEVELS OF KEY CONTROL

It is extraordinarily difficult to reverse engineer EPS G2. Moreover, three separate systems guard against key tampering and illicit copying by staff, visitors or contractors.

01. Controlled Protection

- + It is a requirement that EPS G2 dealers store their components in a secure location within their business. This must include restricted access for their own staff.
- + In addition, new keys can only be ordered by the system owner by supplying proof of identity that matches the dealer's record.
- + EVVA EPS G2 key blanks are only produced at EVVA and the distribution of the keys to authorised dealers is tightly controlled to ensure enhanced security.
- + All master key coding by the dealer must be produced using an approved master key design software.

02. Legal Protection

- + Through patents and licensing, EVVA tightly controls and restricts the manufacture of EPS G2 keys to a small number of authorised dealers.

03. Technical Protection

- + EPS G2 requires not only edge cuts but also side notches that help protect against reverse engineering.





www.evva.com.au/EPS | 1300 003 882
www.evva.co.nz/EPS | +64 (0) 9368 4802